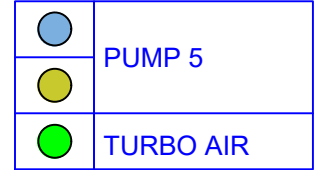
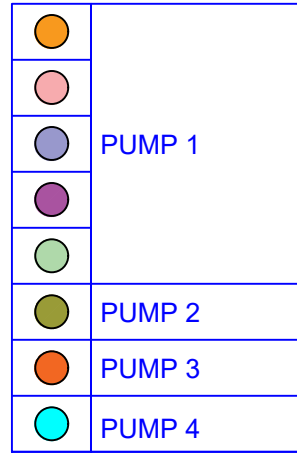
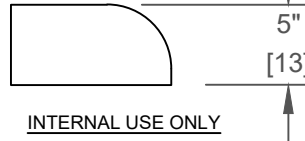
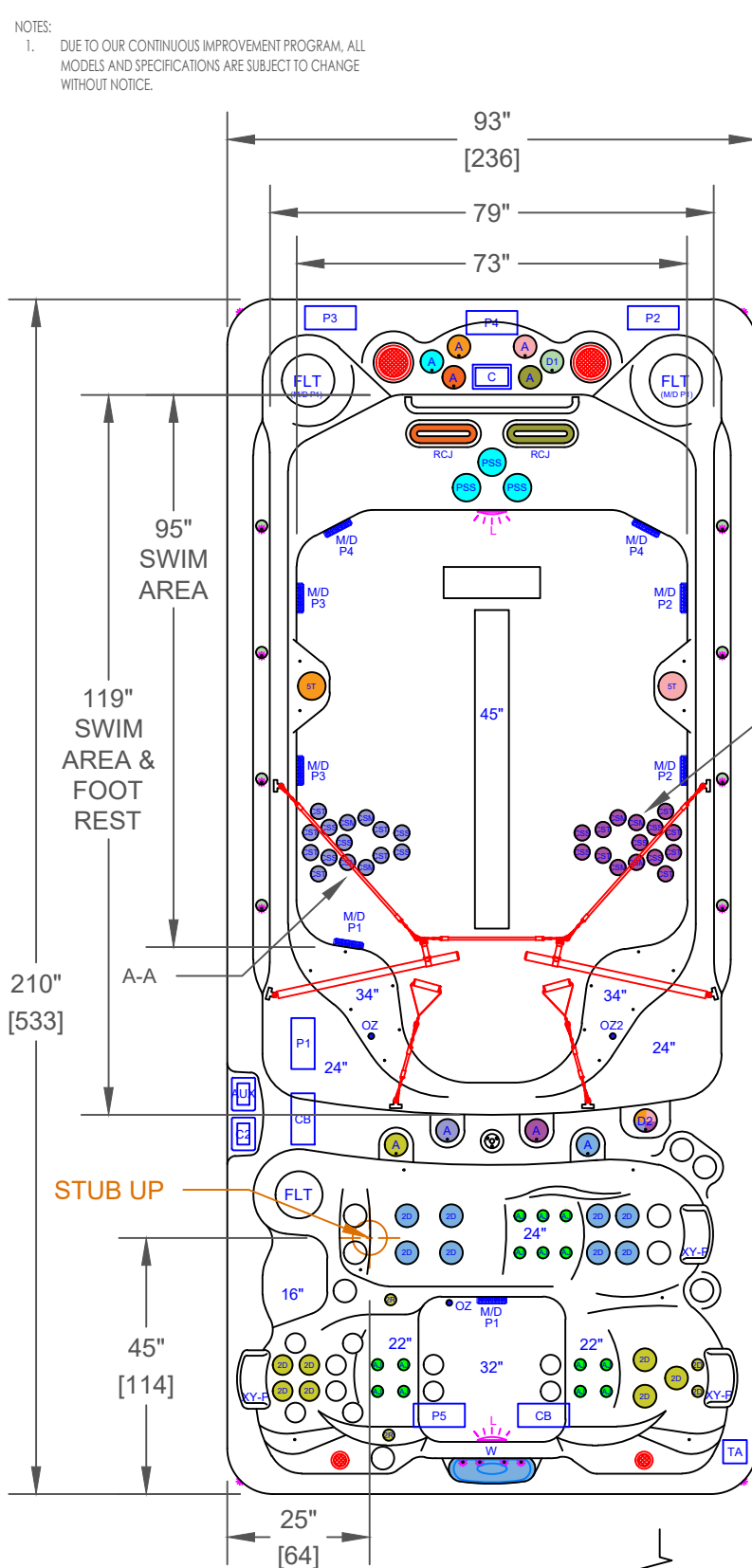


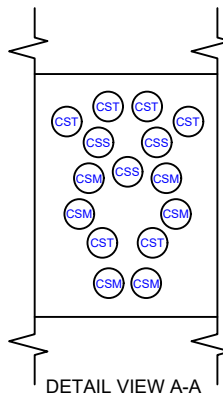
NOTES:
 1. DUE TO OUR CONTINUOUS IMPROVEMENT PROGRAM, ALL MODELS AND SPECIFICATIONS ARE SUBJECT TO CHANGE WITHOUT NOTICE.



P1	PUMP 1
P2	PUMP 2
P3	PUMP 3
P4	PUMP 4
P5	PUMP 5
CB	CONTROL BOX
TA	TURBO AIR

F-1868DZ - LEGEND			
SYMB.	DESCRIPTION	PART NUMBER	QTY.
2D	2" CLUSTER STORM DIRECTIONAL VECTOR X	PLUCS2440019S-HLG	17
2R	2" CLUSTER STORM TWIN VECTOR X	PLUCS2440029S-HLG	2
5T	5" ADJUSTABLE WHIRLPOOL VECTOR X WITH VALVE	PLUCS2394029S-HLG	2
CST	CLUSTER STORM AIR MAX TRI-STREAM	PLU239-8918S-HLG	12
CSS	CLUSTER STORM AIR MAX SOLO-STREAM	PLU239-8908S-HLG	10
CSM	CLUSTER STORM AIR MAX MULTI-STREAM	PLU239-8928S-HLG	8
RCJ	RIP CURRENT JETS	PLU210-5168S-HLG	2
PSS	POWER STREAM JETS	PLU210-0838S	3
D2	ORION 2" WATER DIVERTER VALVE	PLUCS600-7609-CDHL	1
A	ORION AIR CONTROL VALVE	PLUCS660-7609-CDHL	9
W	LED WATERFALL		1
-	27" STAINLESS STEEL HANDRAIL		1
FLT	50 SQ. FT. BIO-CLEAN FILTER WITH TELEWEIR	517-4609LC-HLG	3
M/D	5" MAIN DRAIN 2.5"S	PLU644-5419-HLG V	8
TH	TETHER ANCHOR		1
EA	FITNESS ANCHOR		6
XY-P	TEXTURED Y-PILLOW (WHITE)		3
C	CAL SPAS TOUCH 4 WITH TOUCH 1 AUXILIARY		1
C2	CAL SPAS TOUCH 1 SQUARE		1
-	LED DUAL HYDRO-STREAMERS PLUS™ WITH D1.5 VALVE		1
L	ELITE III SPOTLIGHT 4x CABINET CORNERS LED LIGHTING & STAINLESS STEEL ACCENTS		1
L	5" MULTI COLORED LED LIGHT		2
OZ	PURE SILK OZONATOR WITH MAZZIE INJECTOR AND MIXING CHAMBER		1
OZZ	TWIN PURE SILK™ DUAL OZONATOR WITH MAZZIE INJECTORS AND MIXING CHAMBERS		1
AJ	AIR JET		14
-	LED CAL SPAS LOGO		1

OPTIONS		
SYMB.	DESCRIPTION	OPTION NUMBER
-	DYNAMIC FLOW CONTROL WITH VARIABLE SPEED PUMPS *CHANGES EQUIPMENT TO GECKO	OPT25-139VSP3
-	PURE CURE UV PURIFICATION SYSTEM	OPT25-191B
-	PREMIUM HORIZONTAL CABINET PANELS COLORS: TEAK, WEATHERED WHITE	OPT25-E982C-2
-	CAL GRIP DECKING (FLOOR & STEPS)	OPT25-CG1868DZ
-	CAL CONNECT RF MODULE	OPT25-168RF
🔊	FREEDOM SOUND SYSTEM BLUETOOTH, POWERED SUBWOOFER AND 4X SPEAKERS (2X 3" BLACK 2X 6" WHITE)	OPT25-FS622
-	THERMO-GUARD FULL FOAM (THIS OPTION WILL REPLACE THERMO LAYER)	OPT25-900-XL



PROPRIETARY AND CONFIDENTIAL THE INFORMATION CONTAINED IN THIS DRAWING IS THE SOLE PROPERTY OF CAL SPAS. ANY REPRODUCTION IN PART OR AS A WHOLE WITHOUT THE WRITTEN PERMISSION OF CAL SPAS IS PROHIBITED.		 CAL SPAS INC. 1462 EAST NINTH STREET, POMONA, CA 91766	
SPECIFICATIONS		TITLE	JET LAYOUT - STD
DIMENSION (in)	93"x210"x51"	LINE	SWIM PRO X-SERIES
DIMENSION (cm)	236x533x130	MODEL	2025 SPA LINE OLYMPIAN
DRY WEIGHT	2950 LBS [1338 Kg]	NUM	F-1868DZ
FILLED WEIGHT	21984 LBS [9972 Kg]	DWG NO.	CS003387
WATER CAP.	2285 GAL [8650 L]	SCALE	NTS
		REV	A
		SHEET 1 OF 1	